

TEACHER LOCKER, 5 FH (D 44 CM)

MODEL 4271.250



STANDARD VERSION

Body, 3-layer particle board (E1), melamine coated, highly abrasion-resistant, with 1 mm plastic edge, thickness 19 mm.

Rear panel, 3-layer chipboard (E1), melamine-coated, highly abrasion-resistant, grooved all around, thickness 8 mm.

Back panel, 3-layer chipboard (E1), melamine coated, highly abrasion-resistant, grooved all around, thickness 8 mm.

Cabinet including base.

Teacher compartments individually lockable.

Note: 1 folder height (OH) \triangleq 38.4 cm

OPTIONS

- Decoration group 2
- Front decors price group 2
- Front HPL glued
- Shelf (additional)
- Handle PG 2
- Lock with pin cylinder change core
- Base adjustment
- Steel base (chrome silver 9006)
- Doors different colors

STANDARD

DIN EN 14074, DIN EN 14073-2, DIN EN 14073-3, DIN EN 16121, DIN EN 16122

FEMB level:2017 (Level 3)

TECHNICAL SPECIFICATIONS

| | |
|---------------------------|--------|
| FOLDER HEIGHT | 5 |
| WIDTH | 41 cm |
| TOTAL HEIGHT | 204 cm |
| DEPTH | 44 cm |
| NO. OF COMPARTMENTS | 3 |
| NO. OF ADJUSTABLE SHELVES | 1 |
| WEIGHT | 57 kg |

Our range of materials and colors can be found in the A2S material overview.



A2S-Furnishing Systems Ltd.
ASS-Einrichtungssysteme GmbH
info@a2s.com
WWW.A2S.COM

TEACHER LOCKER, 5 FH (D 44 CM) MODEL 4271.250



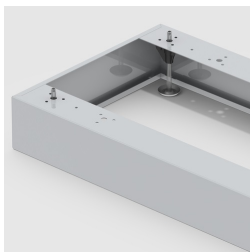
BENEFITS/SPECIALS



Board material melamine
coated with robust plastic edge



Metal cup hinges with 240°
opening angle



Optionally with robust steel
base



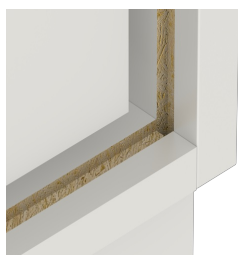
Pull-out proof shelf supports



1 OH cabinet with handle or
lock



Carcass firmly doweled and
glued ex works



Resistance to warping due to 8
mm thick back wall