



STANDARD VERSION

Body, 3-layer particle board (E1), melamine coated, highly abrasion-resistant, with 1 mm plastic edge, thickness 19 mm.

Rear panel, 3-layer chipboard (E1), melamine-coated, highly abrasion-resistant, grooved all around, thickness 8 mm.

Back panel, 3-layer chipboard (E1), melamine coated, highly abrasion-resistant, grooved all around, thickness 8 mm.

Lockable, with center panel.

Note: 1 folder height (OH) \pm 38.4 cm

OPTIONS

- Decoration group 2
- Front HPL glued
- Handle PG 2
- Front decors price group 2
- Shelf (additional)

STANDARD

FEMB level:2017 (Level 3)

DIN EN 14074, DIN EN 14073-2, DIN EN 14073-3, DIN EN 16121, DIN EN 16122

TECHNICAL SPECIFICATIONS

FOLDER HEIGHT	1
WIDTH	80 cm
HEIGHT OF TOP CABINET	40 cm
HEIGHT OF COMBI TOP CABINET	38 cm
DEPTH	58 cm
NO. OF ADJUSTABLE SHELVES	0
NO. OF FIXED SHELVES	0
WEIGHT	27 kg

BENEFITS/SPECIALS



Board material melamine coated with robust plastic edge



Pull-out proof shelf supports



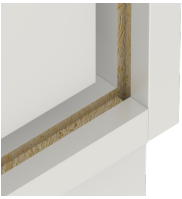
Sliding doors lockable



1 OH cabinet with handle or lock



Carcass firmly doweled and glued ex works



Resistance to warping due to 8 mm thick back wall