

FLEX SWIVEL SPINDLE CHAIR MODEL 7875



STANDARD VERSION

Plastic shell ergonomically shaped. Material made of polypropylene, recyclable, manufactured in double-wall blown process. Thus soft sitting due to air cushioning effect, with integrated ventilation channels and groove to relieve the spine. Grip hole in the lumbar region and recessed grips on the upper edge of the backrest and underside of the chair.

Steel 5-star base, infinitely variable height adjustment by concealed steel swivel spindle with anti-rotation device. Round tubular column: 50 mm, epoxy coated. Floor protector with step protection.

OPTIONS

- Fully upholstered FLEX (size 5-7)
- Felt floor protectors
- Casters (SH +3 cm)

STANDARD

FEMB level:2017 (Level 3)

DIN EN 1729-1, DIN EN 1729-2

LOAD CAPACITY

125 kg

SIZES

SIZE	5-7
CHAIR WIDTH	60 cm
CHAIR HEIGHT	78-94 cm
SEAT HEIGHT	43-59 cm
CHAIR DEPTH	60 cm
STACKABILITY	-
WEIGHT	9 kg

Our range of materials and colors can be found in the A2S material overview.

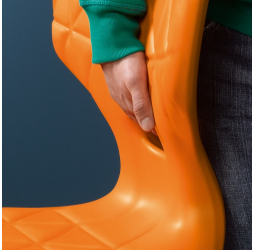


A2S-Furnishing Systems Ltd.
ASS-Einrichtungssysteme GmbH
info@a2s.com
WWW.A2S.COM

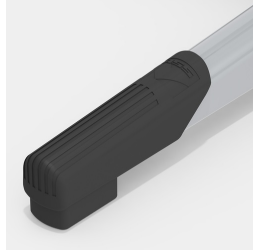
FLEX SWIVEL SPINDLE CHAIR MODEL 7875



BENEFITS/SPECIALS



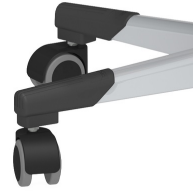
Easy to carry due to low weight



Robust plastic floor protectors with step protection



Optional seat shell fully upholstered from size 5 onwards



Optional swivel spindle base with rubberized double casters



Seat shell with integrated ventilation channel



Extremely robust steel base

FABRIC PROPERTIES

FLEX upholstery

Flame retardant according to DIN 4102 B1 | 250 g/m² +/-5% | 40,000 Martindale tours | Linting 4 | ÖKO-Tex 100