

CORK LINOLEUM WALL BOARD (250X100 CM) MODEL 6815407



STANDARD VERSION

Long wall mounted board. Sandwich support panel, edges with natural anodized aluminum profiles and rounded plastic corners. Edging glued watertight.

Surface made of cork linoleum, glued with carrier plate.

OPTIONS

- Picture strip
- Picture clamp
- Tray
- Tack set

STANDARD

DIN EN 14434, DIN EN 71-3

TECHNICAL SPECIFICATIONS

WIDTH	250 cm
HEIGHT	101 cm
NO. OF WRITING SURFACES	1
WEIGHT	39 kg
VERSION	wall mounted

Our range of materials and colors can be found in the A2S material overview.



A2S-Furnishing Systems Ltd.
ASS-Einrichtungssysteme GmbH
info@a2s.com
WWW.A2S.COM

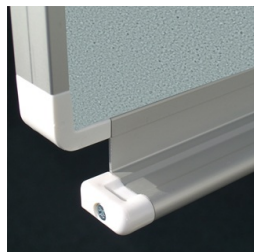
CORK LINOLEUM WALL BOARD (250X100 CM) MODEL 6815407



BENEFITS/SPECIALS



Optionally with picture
clamping bar



Matching shelf for chalk and
pens



Edge protection due to
rounded safety corners



Tackable surface