



STANDARD VERSION

Body, 3-layer particle board (E1), melamine coated, highly abrasion-resistant, with 1 mm plastic edge, thickness 19 mm.
 Rear panel, 3-layer chipboard (E1), melamine-coated, highly abrasion-resistant, grooved all around, thickness 8 mm.
 Back panel, 3-layer chipboard (E1), melamine coated, highly abrasion-resistant, grooved all around, thickness 8 mm.
 Drawer front made of 3-layer chipboard (E1), melamine coated, highly abrasion-resistant, with 2 mm plastic edge, thickness: 19 mm. Full-extension runner with retraction damping. Lockable, security lock with exchangeable cylinder (for 1 OH either lock or handle).
 Cabinet including base.

OPTIONS

- Decoration group 2
- Front decors price group 2
- Handle PG 2
- Lock with pin cylinder change core
- Base adjustment
- Steel base (chrome silver 9006)

STANDARD

DIN EN 14074, DIN EN 14073-2, DIN EN 14073-3, DIN EN 16121, DIN EN 16122

FEMB level:2017 (Level 3)

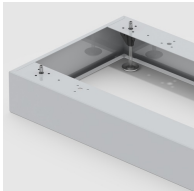
TECHNICAL SPECIFICATIONS

FOLDER HEIGHT	2
WIDTH	47.24 "
TOTAL HEIGHT	35.04 "
DEPTH	16.54 "
WEIGHT	163 lb

BENEFITS/SPECIALS



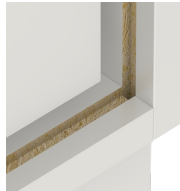
Board material melamine coated with robust plastic edge



Optionally with robust steel base



Smooth-running drawers with roller bearings and soft-closing mechanism



Resistance to warping due to 8 mm thick back wall



Carcass firmly doweled and glued ex works