

# PAGHOLZ® SWIVEL SPINDLE STOOL MODEL 7936



## STANDARD VERSION

PAGWOOD® seat, with ergonomic two-dimensional shell shape. Surface melamine coated and pore sealed with a scratch, impact and abrasion resistant finish created in the pressing process.  
Steel 5-star base, infinitely variable height adjustment by concealed steel swivel spindle with anti-rotation device. Round tubular column: 1.97", epoxy coated. Floor protector with step protection.

## OPTIONS

- Seat decors (beech, maple, gray-white)
- PAGHOLZ® COLOUR WOOD
- Multiplex COLOUR WOOD
- PAGHOLZ® Color Wood - Price group 2
- Multiplex shell
- Felt floor protectors

## STANDARD

FEMB level:2017 (Level 3)

DIN EN 1729-1, DIN EN 1729-2

## LOAD CAPACITY

276 lb

## SIZES

SIZE	5-7
CHAIR WIDTH	26.77 "
SEAT HEIGHT	15.75-22.83 "
CHAIR DEPTH	26.77 "
STACKABILITY	-
WEIGHT	13 lb

Our range of materials and colors can be found in the A2S material overview.



A2S-Furnishing Systems Ltd.  
ASS-Einrichtungssysteme GmbH  
info@a2s.com  
WWW.A2S.COM

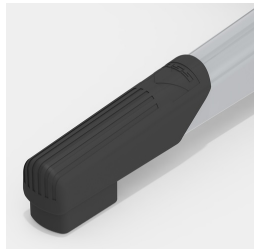
# PAGHOLZ® SWIVEL SPINDLE STOOL MODEL 7936



## BENEFITS/SPECIALS



PAGHOLZ® from sustainable forestry



Robust plastic floor protectors with step protection



Indestructible PAGHOLZ® shell, scratch, break and impact resistant; flame retardant



Extremely robust steel base