



STANDARD VERSION

Body, 3-layer particle board (E1), melamine coated, highly abrasion-resistant, with 1 mm plastic edge, thickness 19 mm.
 Rear panel, 3-layer chipboard (E1), melamine-coated, highly abrasion-resistant, grooved all around, thickness 8 mm.
 Back panel, 3-layer chipboard (E1), melamine coated, highly abrasion-resistant, grooved all around, thickness 8 mm.
 Cabinet including base.
 Shelf with center panel for satchels.

OPTIONS

- Decoration group 2
- Base adjustment
- with side handles
- Castors for cabinet base
- Steel base (chrome silver 9006)

STANDARD

FEMB level:2017 (Level 3)

GS-zertifiziert gem. DIN EN 16121:2017-12, DIN EN 16122:2012-10

TECHNICAL SPECIFICATIONS

WIDTH	27.56 "
TOTAL HEIGHT	47.64 "
DEPTH	18.90 "
INSIDE MEASURE COMPARTMENTS	20.87x12.60x18.11 "
NO. OF COMPARTMENTS	4
NO. OF FIXED SHELVES	2
WEIGHT	77 lb

BENEFITS/SPECIALS



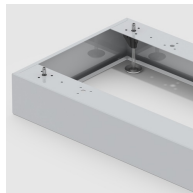
Board material melamine coated with robust plastic edge



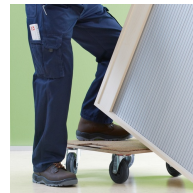
Mobile on 4 castors, 2 of which are lockable



Compartments adapted to school satchels.



Optionally with robust steel base



Carcass firmly dowelled and glued ex works