



## STANDARD VERSION

Material body, base and doors made of 3-layer chipboard (E1), melamine coated, material thickness 0.75". Body and shelves with 0.04" plastic edge, doors with 0.08" plastic edge.

**Note:** 1 folder height (OH)  $\approx$  38.4 cm

Cabinet including base.

Body, 3-layer particle board (E1), melamine coated, highly abrasion-resistant, with 1 mm plastic edge, thickness 19 mm.

Rear panel, 3-layer chipboard (E1), melamine-coated, highly abrasion-resistant, grooved all around, thickness 8 mm.

1-door, lockable. 2/3 safety glass door.

## OPTIONS

- Decoration group 2
- Front decors price group 2
- Front HPL glued
- Shelf (additional)
- Handle PG 2
- Base adjustment
- Steel base (chrome silver 9006)

## STANDARD

DIN EN 14074, DIN EN 14073-2, DIN EN 14073-3, DIN EN 16121, DIN EN 16122

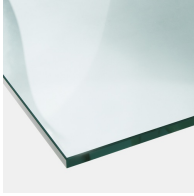
## TECHNICAL SPECIFICATIONS

<b>FOLDER HEIGHT</b>	5
<b>WIDTH</b>	23.62 "
<b>TOTAL HEIGHT</b>	80.31 "
<b>DEPTH</b>	23.62 "
<b>NO. OF ADJUSTABLE SHELVES</b>	3
<b>NO. OF FIXED SHELVES</b>	1
<b>WEIGHT</b>	205 lb

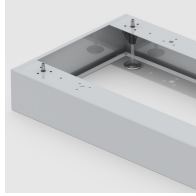
## BENEFITS/SPECIALS



Board material melamine coated with robust plastic edge



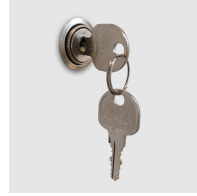
Shatterproof glass



Optionally with robust steel base



Metal cup hinges with 240° opening angle



Cupboard with central locking



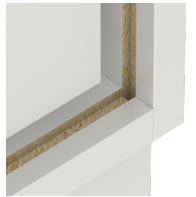
Pull-out proof shelf supports



High quality locking bar



Carcass firmly dowelled and glued ex works



Resistance to warping due to 8 mm thick back wall