



## STANDARD VERSION

Body, 3-layer particle board (E1), melamine coated, highly abrasion-resistant, with 1 mm plastic edge, thickness 19 mm.  
Rear panel, 3-layer chipboard (E1), melamine-coated, highly abrasion-resistant, grooved all around, thickness 8 mm.  
The glued-in, 8 mm thick back panel gives the carcass its stability and strength.

**Note:** 1 folder height (OH)  $\pm$  38.4 cm

## OPTIONS

- Decoration group 2
- Shelf (additional)

## STANDARD

DIN EN 14074, DIN EN 14073-2, DIN EN 14073-3, DIN EN 16121, DIN EN 16122

FEMB level:2017 (Level 3)

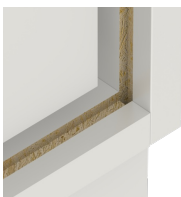
## TECHNICAL SPECIFICATIONS

<b>FOLDER HEIGHT</b>	1
<b>WIDTH</b>	31.50 "
<b>HEIGHT OF TOP CABINET</b>	15.75 "
<b>HEIGHT OF COMBI TOP CABINET</b>	14.96 "
<b>DEPTH</b>	16.54 "
<b>NO. OF ADJUSTABLE SHELVES</b>	0
<b>NO. OF FIXED SHELVES</b>	0
<b>WEIGHT</b>	44 lb

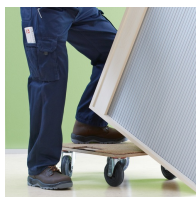
## BENEFITS/SPECIALS



Board material melamine coated with robust plastic edge



Resistance to warping due to 8 mm thick back wall



Carcass firmly dowelled and glued ex works