

# FLEXLAB TRANSPORT CADDY WITH TOP PLATE AND DOOR

MODEL 4131.003



## STANDARD VERSION

4 swivel castors, 2 with total brakes.

Decor in in U023.

Storage compartment open at the top, space for up to 9 small tidy boxes at the bottom.

Side support strip and locking mechanism for top panel made of compressed fiberboard with black core, thickness: 16 mm, underside with cut-outs for form-fit connection with 2 FLEXLAB transport caddies.

Lockable door made of compressed fiberboard with black core, thickness: 16 mm, with 270° opening angle, with acrylic glass panel, left hinged.

## OPTIONS

## TECHNICAL SPECIFICATIONS

WIDTH	38 cm
TOTAL HEIGHT	105 cm
DEPTH	52 cm
WEIGHT	41 kg

Our range of materials and colors can be found in the A2S material overview.



Management System  
ISO 14001:2015  
ISO 9001:2015  
www.a2s.com  
© 2018/05/23



A2S-Furnishing Systems Ltd.  
ASS-Einrichtungssysteme GmbH  
info@a2s.com  
WWW.A2S.COM

# FLEXLAB TRANSPORT CADDY WITH TOP PLATE AND DOOR

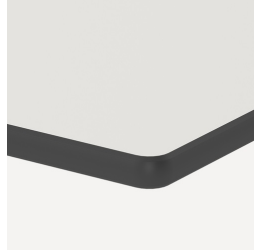
## MODEL 4131.003



### BENEFITS/SPECIALS



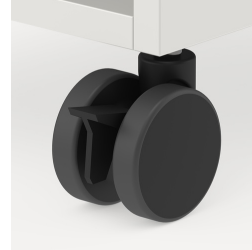
Board material melamine coated with robust plastic edge



Robuste und widerstandsfähige CDF-Platte



Tidy boxes for storing gloves, hats etc.



Mobilität durch 4 stabilen Rollen, davon 2 feststellbar



Verriegelung für Aufsatzplatte



Die verglaste Front gibt freie Sicht auf die Materialien



Zusätzliche Arbeitsfläche durch Aufsatzplatte