



## STANDARD VERSION

**Note:** 1 folder height (OH)  $\triangleq$  38.4 cm

5 FH, 1 door. 1 fixed shelf on top, 1 fixed construction shelf on bottom. 1 large Tidy Box on the bottom as well as optionally 2 large Tidy Boxes or 4 small Tidy Boxes or 1 large Tidy Box and 2 small Tidy B4oxes.

## OPTIONS

- Plate cylinder
- Lock with pin cylinder change core
- Front decors Price group 1
- Front decors price group 2

## STANDARD

FEMB level:2017 (Level 3)

GS-zertifiziert gem. DIN EN 15372:2017-02

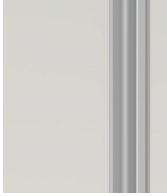
## TECHNICAL SPECIFICATIONS

<b>FOLDER HEIGHT</b>	5
<b>WIDTH</b>	48 cm
<b>TOTAL HEIGHT</b>	204 cm
<b>DEPTH</b>	58 cm
<b>NO. OF FIXED SHELVES</b>	2
<b>WEIGHT</b>	64 kg

## BENEFITS/SPECIALS



Board material melamine coated with robust plastic edge



Cabinet-height handles keep the escape route clear and are easy to reach from any height.



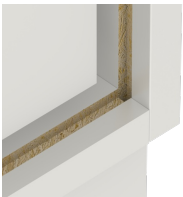
In 3 different equipment variants.



Pull-out proof shelf supports



Support panel material flame-retardant according to DIN 4102 B1



Resistance to warping due to 8 mm thick back wall



Carcass firmly doweled and glued ex works