



## STANDARD VERSION

Body, 3-layer particle board (E1), melamine coated, highly abrasion-resistant, with 1 mm plastic edge, thickness 19 mm.

Rear panel, 3-layer chipboard (E1), melamine-coated, highly abrasion-resistant, grooved all around, thickness 8 mm.

Back panel, 3-layer chipboard (E1), melamine coated, highly abrasion-resistant, grooved all around, thickness 8 mm.

Cabinet including base.

One compartment consisting of: Top compartment (inside dimensions in cm: W 32/H 57/D 46) with 2 coat hooks, bottom compartment (inside dimensions in cm: W 32/H 21/D 46) equipped with 2 pairs of Tidy Box rails.

Optional: 6 or 12 Tidy Boxes small or 6 Tidy Boxes large.

## OPTIONS

- Decoration group 2
- Base adjustment
- Steel base (chrome silver 9006)
- Tidy Box, small
- Tidy Box, large

## STANDARD

FEMB level:2017 (Level 3)

GS-zertifiziert gem. DIN EN 16121:2017-12, DIN EN 16122:2012-10

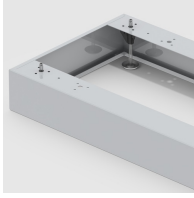
## TECHNICAL SPECIFICATIONS

<b>WIDTH</b>	104 cm
<b>TOTAL HEIGHT</b>	175 cm
<b>DEPTH</b>	48 cm
<b>NO. OF COMPARTMENTS</b>	6
<b>WEIGHT</b>	88 kg

## BENEFITS/SPECIALS



Board material melamine coated with robust plastic edge



Optionally with robust steel base



3 wardrobe hooks for all the children's clothes.



Tidy boxes for storing gloves, hats etc.



Resistance to warping due to 8 mm thick back wall



Carcass firmly doweled and glued ex works