

# 4-LEG GROUP TABLE, METAL FRAME (165 X 114 CM) AMOEBIA SHAPE MODEL 1014.165



## STANDARD VERSION

4-leg base frame, side parts round tube: 40/2 mm, frame square tube welded and rounded: 40/20/2 mm. Frame epoxy coated, with plastic floor protector with level compensation.

Tabletop, 3-layer chipboard (E1), melamine coated, highly abrasion-resistant, with 3 mm plastic edge, thickness: 25 mm.

**Note:** Table height specifications refer to a tabletop thickness of 25 mm.

Disassembled version: table top + frame welded + floor protector.

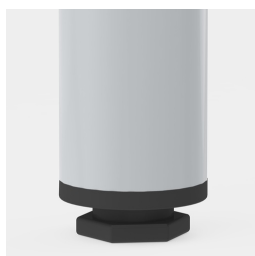
## OPTIONS

- Available assembled or disassembled
- Table top HPL glued
- Teflon floor protector
- Table top finishes price group 2
- Felt floor protectors

## SIZES

TABLE WIDTH	165 cm
TABLE HEIGHT	110 cm
TABLE DEPTH	114 cm
STACKABILITY	-
WEIGHT	61 kg

## BENEFITS/SPECIALS



Floor saver with level compensation compensates for uneven floors

Our range of materials and colors can be found in the A2S material overview.



A2S-Furnishing Systems Ltd.  
ASS-Einrichtungssysteme GmbH  
info@a2s.com  
WWW.A2S.COM