

# STANDING/SITTING TABLE WITH INCLINED TOP, SINGLE SEAT MODEL 7602



## STANDARD VERSION

C-form base frame infinitely adjustable (0-90°), rectangular tube rounded: 40/25/2 mm, oval tube: 50/30/2 mm and flat oval tube 50/20/2 mm. Frame epoxy coated, with plastic floor protector with step protection.

Tabletop, 3-layer chipboard (E1), melamine coated, highly abrasion-resistant, with 3 mm plastic edge, thickness: 19 mm. Book stop strip at the front, incl. pen tray at the back

**Note:** Details on table heights refer to a panel thickness of 19 mm.

## OPTIONS

- Glue-in crowned
- Felt floor protectors
- Book stop bar
- without pen tray
- direct coated

## STANDARD

FEMB level:2017 (Level 3)

## SIZES

SIZE	3-7
TABLE WIDTH	75 cm
TABLE HEIGHT	76-106 cm
TABLE DEPTH	53 cm
STACKABILITY	-
NUMBER OF SEATS	1
WEIGHT	24 kg

Our range of materials and colors can be found in the A2S material overview.



A2S-Furnishing Systems Ltd.  
ASS-Einrichtungssysteme GmbH  
info@a2s.com  
WWW.A2S.COM

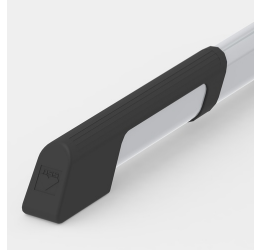
# STANDING/SITTING TABLE WITH INCLINED TOP, SINGLE SEAT MODEL 7602



## BENEFITS/SPECIALS



Including beech solid wood pen tray at the back



Floor protectors with integrated step protection



Optionally with book stop bar



Sturdy, stable and infinitely adjustable frame made of metal