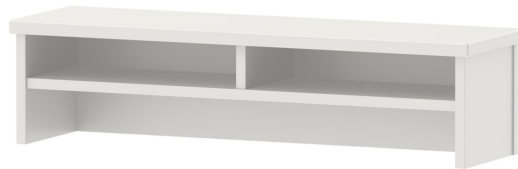


# 6011 (TABLE WIDTH 90) MODEL 6011



## STANDARD VERSION

Body, 3-layer particle board (E1), melamine coated, highly abrasion-resistant, with 1 mm plastic edge, thickness 19 mm.  
Rear panel, 3-layer chipboard (E1), melamine-coated, highly abrasion-resistant, grooved all around, thickness 8 mm.  
Top, 3-layer chipboard (E1), melamine coated, highly abrasion resistant, with 3 mm plastic edge, thickness: 25 mm.  
The table top contains 2 compartments.

## OPTIONS

- Decoration group 2
- Table top HPL glued
- Table top glued with solid wood edge glue-in crowned

## SIZES

TABLE HEIGHT	23 cm	32 cm
TABLE DEPTH	26 cm	26 cm
STACKABILITY	-	-
WEIGHT	17 kg	17 kg

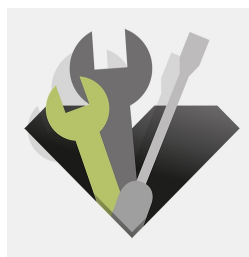
## BENEFITS/SPECIALS



Melamine coated table top with robust plastic edge



Storage compartment creates order and preserves overview



Can be retrofitted at any time

Our range of materials and colors can be found in the A2S material overview.



A2S-Furnishing Systems Ltd.  
ASS-Einrichtungssysteme GmbH  
info@a2s.com  
WWW.A2S.COM