

# FOLDING TABLE (180X80 CM)

## MODEL 3920.188



### STANDARD VERSION

Center column base with double tube, side parts round tube: 30/2 mm, foldable incl. hard rubber stacking protectors. Beveled aluminum frame under table top, natural anodized. Frame epoxy coated, with plastic floor protectors.  
Table top, chipboard, HPL glued, highly abrasion-resistant, with 3 mm plastic edge, thickness: 25 mm

Note: Table height specifications refer to a top thickness of 25 mm.

Note: With optional solid wood frame Table top made of 3-layer chipboard (E1), melamine-coated

### OPTIONS

- Table top finishes price group 2
- Tabletop with ASSODUR® edge
- Glue-in crowned
- Solid wood frame, recessed (for directly coated chipboard)
- Table top HPL glued
- Felt floor protectors
- Table frame chrome plated

### STANDARD

GS-zertifiziert gem. DIN EN 15372

FEMB level:2017 (Level 3)

### SIZES

TABLE WIDTH	180 cm	180 cm
TABLE HEIGHT	72 cm	75 cm
TABLE DEPTH	80 cm	80 cm
STACKABILITY	16 pcs.	16 pcs.
NUMBER OF SEATS	6	6
WEIGHT	35 kg	35 kg

Our range of materials and colors can be found in the A2S material overview.



A2S-Furnishing Systems Ltd.  
ASS-Einrichtungssysteme GmbH  
info@a2s.com  
WWW.A2S.COM

# FOLDING TABLE (180X80 CM) MODEL 3920.188



## BENEFITS/SPECIALS



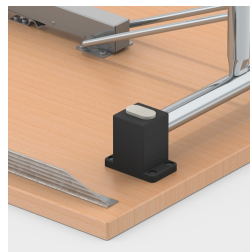
Melamine coated table top with robust plastic edge



Optional melamine coated table top with solid wood edge



Optionally with recessed solid wood frame



Stacking protectors protect the table top from scratch marks



Optional melamine coated table top with ASSODUR® edge



Easy folding of the table legs



Stackable up to 16 tables