

4-LEG FOLDING TABLE (160X80 CM)

MODEL 3930.168



STANDARD VERSION

4-leg base frame, round tube: 40/2 mm, foldable incl. hard rubber stacking protectors. Beveled aluminum frame under table top, natural anodized. Frame epoxy coated, with plastic floor protectors with level compensation. Table top, chipboard, HPL glued, highly abrasion-resistant, with 3 mm plastic edge, thickness: 25 mm

Note: Table height specifications refer to a top thickness of 25 mm.

Note: With optional solid wood frame Table top made of 3-layer chipboard (E1), melamine-coated

OPTIONS

- Table top finishes price group 2
- Tabletop with ASSODUR® edge
- Glue-in crowned
- Solid wood frame, recessed (for directly coated chipboard)
- Table top HPL glued
- Felt floor protectors
- Teflon floor protector
- Table frame chrome plated

STANDARD

GS-zertifiziert gem. DIN EN 15372

FEMB level:2017 (Level 3)

SIZES

| | | |
|-----------------|---------|---------|
| TABLE WIDTH | 160 cm | 160 cm |
| TABLE HEIGHT | 72 cm | 75 cm |
| TABLE DEPTH | 80 cm | 80 cm |
| STACKABILITY | 16 pcs. | 16 pcs. |
| NUMBER OF SEATS | 4 | 4 |
| WEIGHT | 35 kg | 35 kg |

Our range of materials and colors can be found in the A2S material overview.



A2S-Furnishing Systems Ltd.
 ASS-Einrichtungssysteme GmbH
 info@a2s.com
 WWW.A2S.COM

4-LEG FOLDING TABLE (160X80 CM) MODEL 3930.168



BENEFITS/SPECIALS



Melamine coated table top with robust plastic edge



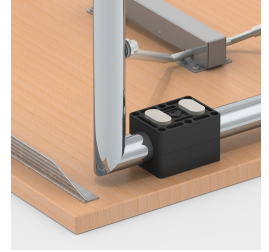
Optional melamine coated table top with solid wood edge



Optionally with recessed solid wood frame



Floor protector with level compensation: compensates for uneven floors



Stacking protectors protect the table top from scratch marks



Optional melamine coated table top with ASSODUR® edge



Easy folding of the table legs



Stackable up to 16 tables