

# 4-LEG FOLDING TABLE (140X80 CM) MODEL 3930.148



## STANDARD VERSION

4-leg base frame, round tube: 40/2 mm, foldable incl. hard rubber stacking protectors. Beveled aluminum frame under table top, natural anodized. Frame epoxy coated, with plastic floor protectors with level compensation. Tabletop, 3-layer chipboard (E1), melamine coated, highly abrasion-resistant, with 3 mm plastic edge, thickness: 25 mm.  
**Note:** Table height specifications refer to a tabletop thickness of 25 mm.

## OPTIONS

- Table top finishes price group 2
- Table top HPL glued
- Tabletop with ASSODUR® edge
- Table top glued with solid wood edge glue-in crowned
- Solid wood frame, recessed (for directly coated chipboard)
- Felt floor protectors
- Teflon floor protector
- Table frame chrome plated

## STANDARD

GS-zertifiziert gem. DIN EN 15372

FEMB level:2017 (Level 3)

## SIZES

TABLE WIDTH	140 cm	140 cm
TABLE HEIGHT	72 cm	75 cm
TABLE DEPTH	80 cm	80 cm
STACKABILITY	16 pcs.	16 pcs.
NUMBER OF SEATS	4	4
WEIGHT	32 kg	33 kg

Our range of materials and colors can be found in the A2S material overview.



A2S-Furnishing Systems Ltd.  
ASS-Einrichtungssysteme GmbH  
info@a2s.com  
WWW.A2S.COM

# 4-LEG FOLDING TABLE (140X80 CM) MODEL 3930.148



## BENEFITS/SPECIALS



Melamine coated table top with robust plastic edge



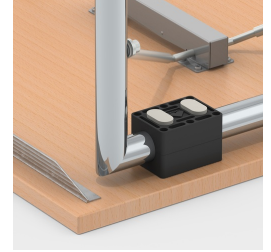
Optional melamine coated table top with solid wood edge



Optionally with recessed solid wood frame



Floor protector with level compensation: compensates for uneven floors



Stacking protectors protect the table top from scratch marks



Optional melamine coated table top with ASSODUR® edge



Easy folding of the table legs



Stackable up to 16 tables