



## STANDARD VERSION

Body, 3-layer particle board (E1), melamine coated, highly abrasion-resistant, with 1 mm plastic edge, thickness 19 mm.  
Rear panel, 3-layer chipboard (E1), melamine-coated, highly abrasion-resistant, grooved all around, thickness 8 mm.  
Back panel, 3-layer chipboard (E1), melamine coated, highly abrasion-resistant, grooved all around, thickness 8 mm.  
Doors, 3-layer particle board (E1), melamine coated, highly abrasion resistant, with 2 mm plastic edge, thickness 19 mm.  
Arch handle chrome matt  
**Note:** 1 folder height (OH)  $\Delta$  38.4 cm  
Cabinet including base.

## OPTIONS

- Decoration group 2
- Front decors price group 2
- Front HPL glued
- Shelf (additional)
- Handle PG 2
- Base adjustment
- Steel base (chrome silver 9006)

## STANDARD

DIN EN 14074, DIN EN 14073-2, DIN EN 14073-3, DIN EN 16121, DIN EN 16122

FEMB level:2017 (Level 3)

## TECHNICAL SPECIFICATIONS

|                                  |        |
|----------------------------------|--------|
| <b>FOLDER HEIGHT</b>             | 4      |
| <b>WIDTH</b>                     | 100 cm |
| <b>TOTAL HEIGHT</b>              | 165 cm |
| <b>DEPTH</b>                     | 60 cm  |
| <b>NO. OF ADJUSTABLE SHELVES</b> | 3      |
| <b>WEIGHT</b>                    | 120 kg |

## BENEFITS/SPECIALS



Board material melamine coated with robust plastic edge



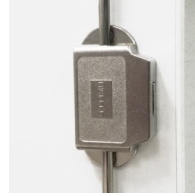
1 OH cabinet with handle or lock



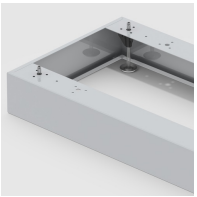
Metal cup hinges with 240° opening angle



Pull-out proof shelf supports



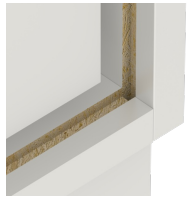
High quality locking bar



Optionally with robust steel base



Carcass firmly doweled and glued ex works



Resistance to warping due to 8 mm thick back wall