



## STANDARD VERSION

Body, 3-layer particle board (E1), melamine coated, highly abrasion-resistant, with 1 mm plastic edge, thickness 19 mm.  
 Rear panel, 3-layer chipboard (E1), melamine-coated, highly abrasion-resistant, grooved all around, thickness 8 mm.  
 Back panel, 3-layer chipboard (E1), melamine coated, highly abrasion-resistant, grooved all around, thickness 8 mm.  
 Doors, 3-layer particle board (E1), melamine coated, highly abrasion resistant, with 2 mm plastic edge, thickness 19 mm.  
 Arch handle chrome matt  
**Note:** 1 folder height (OH)  $\Delta$  38.4 cm  
 Cabinet including base.

## OPTIONS

- Decoration group 2
- Front decors price group 2
- Front HPL glued
- Castors for cabinet base
- Shelf (additional)
- Handle PG 2
- Base adjustment
- Steel base (chrome silver 9006)

## STANDARD

DIN EN 14074, DIN EN 14073-2, DIN EN 14073-3, DIN EN 16121, DIN EN 16122

FEMB level:2017 (Level 3)

## TECHNICAL SPECIFICATIONS

|                        |        |
|------------------------|--------|
| <b>FOLDER HEIGHT</b>   | 3      |
| <b>WIDTH</b>           | 120 cm |
| <b>TOTAL HEIGHT</b>    | 127 cm |
| <b>HEIGHT OF COMBI</b> | 115 cm |
| <b>TOP CABINET</b>     |        |
| <b>DEPTH</b>           | 60 cm  |
| <b>NO. OF</b>          | 4      |
| <b>ADJUSTABLE</b>      |        |
| <b>SHELVES</b>         |        |
| <b>WEIGHT</b>          | 93 kg  |

## BENEFITS/SPECIALS



Board material melamine coated with robust plastic edge



1 OH cabinet with handle or lock



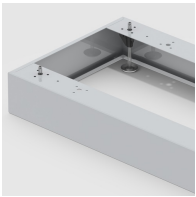
Metal cup hinges with 240° opening angle



Pull-out proof shelf supports



High quality locking bar



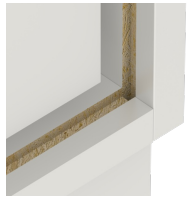
Optionally with robust steel base



Mobile on 4 castors, 2 of which are lockable



Carcass firmly doweled and glued ex works



Resistance to warping due to 8 mm thick back wall