

# 90° TRIANGLE TABLE, METAL WELDED (110X80X80 CM)

MODEL 1003.118



## STANDARD VERSION

Tabletop, 3-layer chipboard (E1), melamine coated, highly abrasion-resistant, with 3 mm plastic edge, thickness: 25 mm.

**Note:** Table height specifications refer to a tabletop thickness of 25 mm.

Corner radius: 40 mm.

3-leg base frame, side parts round tube: 40/2 mm, frame square tube rounded: 40/20/2 mm. Frame firmly welded, epoxy resin coated, with plastic floor protector with level compensation.

Table top shape: 90° triangular.

## OPTIONS

- Tabletop with ASSODUR® edge
- Table top HPL glued
- Table top compact board 12 mm
- Felt floor protectors
- Teflon floor protector
- Fixed castor
- Table frame chrome plated
- Height adjustment 3-7

## STANDARD

GS-zertifiziert gem. DIN EN 1729-1, DIN EN 1729-2, DIN EN 15372

FEMB level:2017 (Level 3)

## SIZES

SIZE	3	4	5	6	7	72 cm	75 cm
TABLE WIDTH	110 cm	110 cm	110 cm	110 cm	110 cm	110 cm	110 cm
TABLE HEIGHT	58 cm	64 cm	70 cm	76 cm	82 cm	72 cm	75 cm
TABLE DEPTH	59 cm	59 cm	59 cm	59 cm	59 cm	59 cm	59 cm
ADJUSTMENT	80 cm	80 cm	80 cm	80 cm	80 cm	80 cm	80 cm
DIMENSION							
STACKABILITY	–	–	–	–	–	–	–
NUMBER OF SEATS	1	1	1	1	1	1	1
WEIGHT	25 kg	25 kg	26 kg	26 kg	27 kg	26 kg	26 kg

Our range of materials and colors can be found in the A2S material overview.



A2S-Furnishing Systems Ltd.  
ASS-Einrichtungssysteme GmbH  
info@a2s.com  
WWW.A2S.COM

# 90° TRIANGLE TABLE, METAL WELDED (110X80X80 CM)

MODEL 1003.118



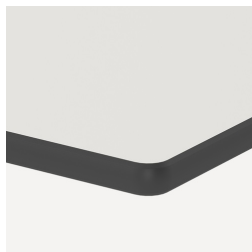
## BENEFITS/SPECIALS



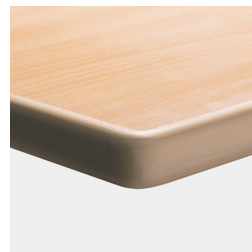
Melamine coated table top with robust plastic edge



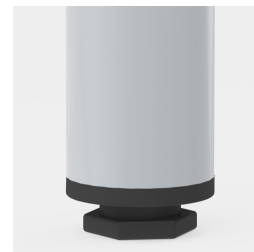
Optional table top with 40 mm corner radius



Optional compact board as table top



Optional melamine coated table top with ASSODUR® edge



Floor saver with level compensation compensates for uneven floors



Optional rack mobile by means of 1 fixed castor