

90° TRIANGLE TABLE, METAL WELDED (110X80X80 CM)

MODEL 1003.118



STANDARD VERSION

Tabletop, 3-layer chipboard (E1), melamine coated, highly abrasion-resistant, with 3 mm plastic edge, thickness: 25 mm.

Note: Table height specifications refer to a tabletop thickness of 25 mm.

Corner radius: 40 mm.

3-leg base frame, side parts round tube: 40/2 mm, frame square tube rounded: 40/20/2 mm. Frame firmly welded, epoxy resin coated, with plastic floor protector with level compensation.

Table top shape: 90° triangular.

OPTIONS

- Tabletop with ASSODUR® edge
- Table top HPL glued
- Table top compact board 12 mm
- Felt floor protectors
- Teflon floor protector
- Fixed castor
- Table frame chrome plated
- Height adjustment 3-7

STANDARD

GS-zertifiziert gem. DIN EN 1729-1, DIN EN 1729-2, DIN EN 15372

FEMB level:2017 (Level 3)

SIZES

| SIZE | 3 | 4 | 5 | 6 | 7 | 72 cm | 75 cm |
|----------------------|--------|--------|--------|--------|--------|--------|--------|
| TABLE WIDTH | 110 cm | 110 cm | 110 cm | 110 cm | 110 cm | 110 cm | 110 cm |
| TABLE HEIGHT | 58 cm | 64 cm | 70 cm | 76 cm | 82 cm | 72 cm | 75 cm |
| TABLE DEPTH | 59 cm | 59 cm | 59 cm | 59 cm | 59 cm | 59 cm | 59 cm |
| ADJUSTMENT DIMENSION | 80 cm | 80 cm | 80 cm | 80 cm | 80 cm | 80 cm | 80 cm |
| STACKABILITY | - | - | - | - | - | - | - |
| NUMBER OF SEATS | 1 | 1 | 1 | 1 | 1 | 1 | 1 |
| WEIGHT | 25 kg | 25 kg | 26 kg | 26 kg | 27 kg | 26 kg | 26 kg |

Our range of materials and colors can be found in the A2S material overview.



A2S-Furnishing Systems Ltd.
 ASS-Einrichtungssysteme GmbH
 info@a2s.com
 WWW.A2S.COM

90° TRIANGLE TABLE, METAL WELDED (110X80X80 CM)

MODEL 1003.118



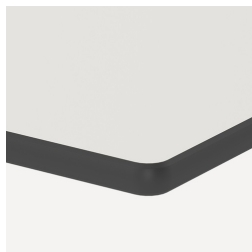
BENEFITS/SPECIALS



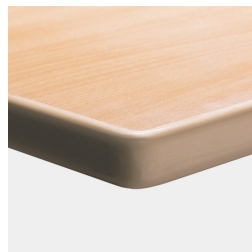
Melamine coated table top with robust plastic edge



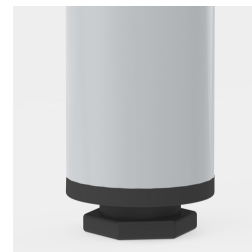
Optional table top with 40 mm corner radius



Optional compact board as table top



Optional melamine coated table top with ASSODUR® edge



Floor saver with level compensation compensates for uneven floors



Optional rack mobile by means of 1 fixed castor