

HINGED DOOR CABINET (D 60 CM) MODEL 4446.630



STANDARD VERSION

Body, 3-layer particle board (E1), melamine coated, highly abrasion-resistant, with 1 mm plastic edge, thickness 19 mm.
 Rear panel, 3-layer chipboard (E1), melamine-coated, highly abrasion-resistant, grooved all around, thickness 8 mm.
 Back panel, 3-layer chipboard (E1), melamine coated, highly abrasion-resistant, grooved all around, thickness 8 mm.
 Doors, 3-layer particle board (E1), melamine coated, highly abrasion resistant, with 2 mm plastic edge, thickness 19 mm.
 Arch handle chrome matt

Note: 1 folder height (OH) \triangleq 38.4 cm

Cabinet including base.

OPTIONS

- Decoration group 2
- Front decors price group 2
- Front HPL glued
- Castors for cabinet base
- Shelf (additional)
- Handle PG 2
- Base adjustment
- Steel base (chrome silver 9006)

STANDARD

DIN EN 14074, DIN EN 14073-2, DIN EN 14073-3, DIN EN 16121, DIN EN 16122

FEMB level:2017 (Level 3)

TECHNICAL SPECIFICATIONS

| | |
|--------------------------------|--------|
| FOLDER HEIGHT | 3 |
| WIDTH | 80 cm |
| TOTAL HEIGHT | 127 cm |
| HEIGHT OF COMBI TOP CABINET | 115 cm |
| DEPTH | 60 cm |
| NO. OF COMPARTMENTS | 6 |
| NO. OF ADJUSTABLE SHELVES | 4 |
| WEIGHT | 75 kg |

Our range of materials and colors can be found in the A2S material overview.



A2S-Furnishing Systems Ltd.
 ASS-Einrichtungssysteme GmbH
 info@a2s.com
 WWW.A2S.COM

HINGED DOOR CABINET (D 60 CM) MODEL 4446.630



BENEFITS/SPECIALS



Board material melamine coated with robust plastic edge



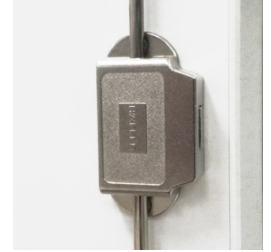
1 OH cabinet with handle or lock



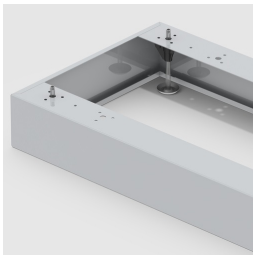
Metal cup hinges with 240° opening angle



Pull-out proof shelf supports



High quality locking bar



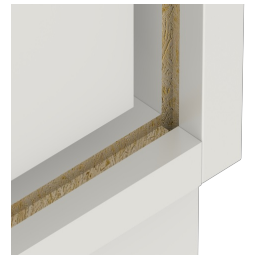
Optionally with robust steel base



Mobile on 4 castors, 2 of which are lockable



Carcass firmly doweled and glued ex works



Resistance to warping due to 8 mm thick back wall