



STANDARD VERSION

Body, 3-layer particle board (E1), melamine coated, highly abrasion-resistant, with 1 mm plastic edge, thickness 19 mm.
Rear panel, 3-layer chipboard (E1), melamine-coated, highly abrasion-resistant, grooved all around, thickness 8 mm.
Back panel, 3-layer chipboard (E1), melamine coated, highly abrasion-resistant, grooved all around, thickness 8 mm.
Cabinet including base.

One compartment consisting of: Top compartment (inside dimensions in cm: W 32/H 57/D 46) with 2 coat hooks, bottom compartment (inside dimensions in cm: W 32/H 21/D 46) equipped with 2 pairs of Tidy Box rails.

Optional: 4 or 8 Tidy Boxes small or 4 Tidy Boxes large.

OPTIONS

- Decoration group 2
- Base adjustment
- Steel base (chrome silver 9006)
- Tidy Box, small
- Tidy Box, large

STANDARD

FEMB level:2017 (Level 3)

GS-zertifiziert gem. DIN EN 16121:2017-12, DIN EN 16122:2012-10

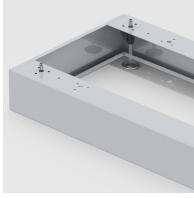
TECHNICAL SPECIFICATIONS

WIDTH	70 cm
TOTAL HEIGHT	175 cm
DEPTH	48 cm
NO. OF COMPARTMENTS	4
WEIGHT	65 kg

BENEFITS/SPECIALS



Board material melamine coated with robust plastic edge



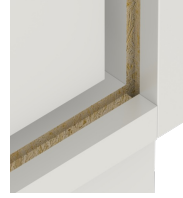
Optionally with robust steel base



3 wardrobe hooks for all the children's clothes.



Tidy boxes for storing gloves, hats etc.



Resistance to warping due to 8 mm thick back wall



Carcass firmly doweled and glued ex works