



## STANDARD VERSION

Top unit for hall cupboard

Material Body, plinth and shelves made of 3-layer chipboard (E1), melamine resin-coated, thickness 19 mm. Center layer B1 according to DIN 4102. 1 mm plastic edge on body and shelves, 2 mm plastic edge on doors. HPL-coated door on both sides, making it particularly scratch-resistant. Door with continuous silver-colored aluminium handle strip. White decor finish: flame-retardant for use in public areas.

**Note:** 1 folder height (OH)  $\hat{=}$  38.4 cm

## OPTIONS

■ Front decors Price group 1

■ Front decors price group 2

## STANDARD

FEMB level:2017 (Level 3)

GS-zertifiziert gem. DIN EN 15372:2017-02

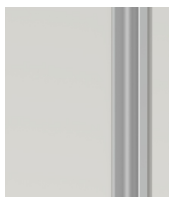
## TECHNICAL SPECIFICATIONS

<b>FOLDER HEIGHT</b>	1
<b>WIDTH</b>	48 cm
<b>HEIGHT OF TOP CABINET</b>	40 cm
<b>DEPTH</b>	58 cm
<b>NO. OF ADJUSTABLE SHELVES</b>	0
<b>NO. OF FIXED SHELVES</b>	0
<b>WEIGHT</b>	17 kg

## BENEFITS/SPECIALS



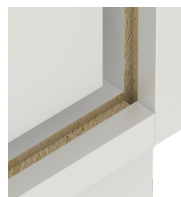
Board material melamine coated with robust plastic edge



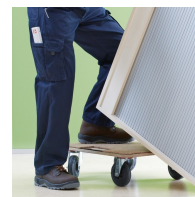
Cabinet-height handles keep the escape route clear and are easy to reach from any height.



Support panel material flame-retardant according to DIN 4102 B1



Resistance to warping due to 8 mm thick back wall



Carcass firmly doweled and glued ex works