



STANDARD VERSION

Top unit for hall cupboard

Material Body, plinth and shelves made of 3-layer chipboard (E1), melamine resin-coated, thickness 19 mm. Center layer B1 according to DIN 4102. 1 mm plastic edge on body and shelves, 2 mm plastic edge on doors. HPL-coated door on both sides, making it particularly scratch-resistant. Door with continuous silver-colored aluminium handle strip. White decor finish: flame-retardant for use in public areas.

Note: 1 folder height (OH) $\hat{=}$ 38.4 cm

OPTIONS

- Front decors Price group 1
- Front decors price group 2

STANDARD

FEMB level:2017 (Level 3)

GS-zertifiziert gem. DIN EN 15372:2017-02

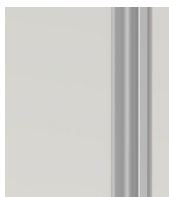
TECHNICAL SPECIFICATIONS

FOLDER HEIGHT	1
WIDTH	48 cm
HEIGHT OF TOP CABINET	40 cm
DEPTH	58 cm
NO. OF ADJUSTABLE SHELVES	0
NO. OF FIXED SHELVES	0
WEIGHT	17 kg

BENEFITS/SPECIALS



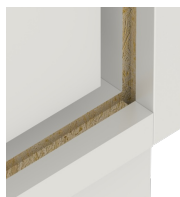
Board material melamine coated with robust plastic edge



Cabinet-height handles keep the escape route clear and are easy to reach from any height.



Support panel material flame-retardant according to DIN 4102 B1



Resistance to warping due to 8 mm thick back wall



Carcass firmly doweled and glued ex works