



STANDARD VERSION

Body, 3-layer particle board (E1), melamine coated, highly abrasion-resistant, with 1 mm plastic edge, thickness 19 mm.

Rear panel, 3-layer chipboard (E1), melamine-coated, highly abrasion-resistant, grooved all around, thickness 8 mm.

Back panel, 3-layer chipboard (E1), melamine coated, highly abrasion-resistant, grooved all around, thickness 8 mm.

Cabinet including base.

Note: 1 folder height (OH) \pm 38.4 cm

Shelf without center panel, with 1 hat shelf.

OPTIONS

- Decoration group 2
- Shelf (additional)
- Base adjustment
- Steel base (chrome silver 9006)

STANDARD

FEMB level:2017 (Level 3)

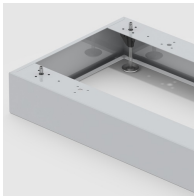
TECHNICAL SPECIFICATIONS

FOLDER HEIGHT	5
WIDTH	61 cm
TOTAL HEIGHT	204 cm
DEPTH	58 cm
NO. OF FIXED SHELVES	1
WEIGHT	95 kg

BENEFITS/SPECIALS



Board material melamine coated with robust plastic edge



Optionally with robust steel base



Resistance to warping due to 8 mm thick back wall



Carcass firmly doweled and glued ex works