

# PROPERTY CABINET MODEL 4004.820



## STANDARD VERSION

Body, 3-layer particle board (E1), melamine coated, highly abrasion-resistant, with 1 mm plastic edge, thickness 19 mm.

Rear panel, 3-layer chipboard (E1), melamine-coated, highly abrasion-resistant, grooved all around, thickness 8 mm.

Cabinet including base.

Property cupboard with central wall and compartments.

## OPTIONS

- Decoration group 2
- with side handles
- Castors for cabinet base
- Base adjustment
- Steel base (chrome silver 9006)

## STANDARD

DIN EN 14074, DIN EN 14073-2, DIN EN 14073-3, DIN EN 16121, DIN EN 16122

FEMB level:2017 (Level 3)

## TECHNICAL SPECIFICATIONS

FOLDER HEIGHT	2
WIDTH	138 cm
TOTAL HEIGHT	89 cm
DEPTH	48 cm
INSIDE MEASURE	24x66x46 cm
COMPARTMENTS	
NO. OF	6
COMPARTMENTS	
NO. OF FIXED	4
SHELVES	
WEIGHT	64 kg

Our range of materials and colors can be found in the A2S material overview.



A2S-Furnishing Systems Ltd.  
ASS-Einrichtungssysteme GmbH  
info@a2s.com  
WWW.A2S.COM

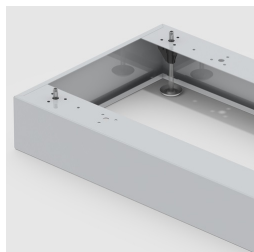
# PROPERTY CABINET MODEL 4004.820



## BENEFITS/SPECIALS



Board material melamine coated with robust plastic edge



Optionally with robust steel base



Mobile on 4 castors, 2 of which are lockable



Resistance to warping due to 8 mm thick back wall



Carcass firmly doweled and glued ex works