

# CHANGE MEDIA CADDY MODEL 9124



## STANDARD VERSION

Material made of 3-layer chipboard (E1), melamine coated, with 2 mm plastic edge, material thickness 19 mm. Back panel thickness 8 mm. Rounded aluminum profile corners.

Includes invisible connection system by means of magnets.

Lower part with roller shutter, above 1 utensil drawer 1 U, 1 drawer 2 U, pull-out shelf for laptop (full extension), 1 shelf, 4-fold socket strip, rear with 1 cable set (model 0904), 1 ventilation grille and 1 furniture handle. Cabinet mobile on 4 braked swivel casters.

## OPTIONS

- Shelf (additional)
- Handle PG 2

## STANDARD

FEMB level:2017 (Level 3)

## TECHNICAL SPECIFICATIONS

WIDTH	43 cm
TOTAL HEIGHT	111 cm
DEPTH	65 cm
WEIGHT	56 kg

Our range of materials and colors can be found in the A2S material overview.



A2S-Furnishing Systems Ltd.  
ASS-Einrichtungssysteme GmbH  
info@a2s.com  
WWW.A2S.COM

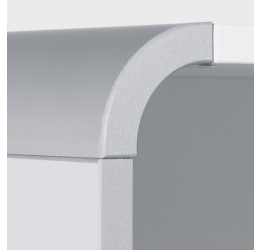
# CHANGE MEDIA CADDY MODEL 9124



## BENEFITS/SPECIALS



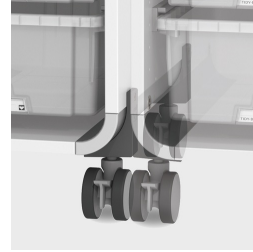
Board material melamine coated with robust plastic edge



Rounded aluminum profile corners



Mobile on 4 castors, 2 of which are lockable



Magnetic linking system



Optionally with magnetic pages



utensil drawer for office supplies