

COUNTER CABINETS, WITH RECESSED CENTER PANEL

MODEL 4605.810



STANDARD VERSION

Body, 3-layer particle board (E1), melamine coated, highly abrasion-resistant, with 1 mm plastic edge, thickness 19 mm.

Rear panel, 3-layer chipboard (E1), melamine-coated, highly abrasion-resistant, grooved all around, thickness 8 mm.

Back panel, 3-layer chipboard (E1), melamine coated, highly abrasion-resistant, grooved all around, thickness 8 mm.

Material body, base and doors made of 3-layer chipboard (E1), melamine coated, material thickness 19 mm. Body and shelves with 1 mm plastic edge, doors with 2 mm plastic edge.

Cabinet including base.

With recessed center panel, with 6 small compartments on top, lockable doors.

OPTIONS

- Decoration group 2
- Front decors price group 2
- Front HPL glued
- Shelf (additional)
- Handle PG 2
- Base adjustment
- Steel base (chrome silver 9006)

STANDARD

DIN EN 14074, DIN EN 14073-2, DIN EN 14073-3, DIN EN 16121, DIN EN 16122

FEMB level:2017 (Level 3)

TECHNICAL SPECIFICATIONS

WIDTH	120 cm
TOTAL HEIGHT	105 cm
DEPTH	42 cm
NO. OF ADJUSTABLE SHELVES	2
WEIGHT	75 kg

Our range of materials and colors can be found in the A2S material overview.



A2S-Furnishing Systems Ltd.
ASS-Einrichtungssysteme GmbH
info@a2s.com
WWW.A2S.COM

COUNTER CABINETS, WITH RECESSED CENTER PANEL

MODEL 4605.810



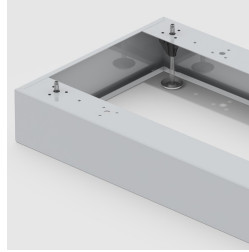
BENEFITS/SPECIALS



Board material melamine coated with robust plastic edge



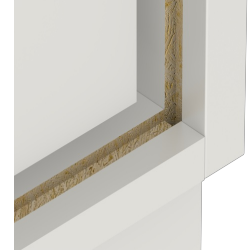
Sliding doors lockable



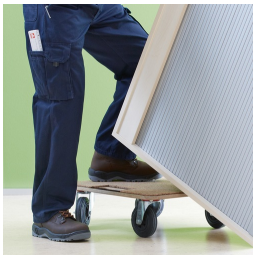
Optionally with robust steel base



Pull-out proof shelf supports



Resistance to warping due to 8 mm thick back wall



Carcass firmly doweled and glued ex works



Smooth sliding doors