



STANDARD VERSION

Body, 3-layer particle board (E1), melamine coated, highly abrasion-resistant, with 1 mm plastic edge, thickness 19 mm.
 Rear panel, 3-layer chipboard (E1), melamine-coated, highly abrasion-resistant, grooved all around, thickness 8 mm.
 Back panel, 3-layer chipboard (E1), melamine coated, highly abrasion-resistant, grooved all around, thickness 8 mm.
 Doors, 3-layer particle board (E1), melamine coated, highly abrasion resistant, with 2 mm plastic edge, thickness 19 mm.
 Arch handle chrome matt
 Cabinet including base.
 Top with 12 magazine flaps. Bottom 2-door 2 OH, individually lockable on both sides.

OPTIONS

- Handle PG 2
- Base adjustment
- Steel base (chrome silver 9006)
- Decoration group 2
- Front decors price group 2
- Front HPL glued
- Shelf (additional)

STANDARD

FEMB level:2017 (Level 3)

TECHNICAL SPECIFICATIONS

FOLDER HEIGHT	5
WIDTH	120 cm
TOTAL HEIGHT	204 cm
DEPTH	44 cm
NO. OF ADJUSTABLE SHELVES	2
NO. OF FIXED SHELVES	6
WEIGHT	80 kg

BENEFITS/SPECIALS



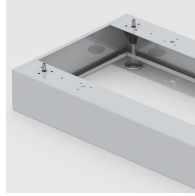
Board material melamine coated with robust plastic edge



Metal cup hinges with 240° opening angle



Pull-out proof shelf supports



Optionally with robust steel base



1 OH cabinet with handle or lock



Carcass firmly doweled and glued ex works



Resistance to warping due to 8 mm thick back wall