



## STANDARD VERSION

Body, 3-layer particle board (E1), melamine coated, highly abrasion-resistant, with 1 mm plastic edge, thickness 19 mm.

Rear panel, 3-layer chipboard (E1), melamine-coated, highly abrasion-resistant, grooved all around, thickness 8 mm.

Back panel, 3-layer chipboard (E1), melamine coated, highly abrasion-resistant, grooved all around, thickness 8 mm.

Material body, base and doors made of 3-layer chipboard (E1), melamine coated, material thickness 19 mm. Body and shelves with 1 mm plastic edge, doors with 2 mm plastic edge.

Cabinet including base.

**Note:** 1 folder height (OH)  $\pm$  38.4 cm

Upper 2 FH 2-door, lockable on one side, lower 3 FH with hanging file, with central locking.

## OPTIONS

- Decoration group 2
- Shelf (additional)
- Steel base (chrome silver 9006)
- Front decors price group 2
- Handle PG 2

## STANDARD

DIN EN 14074, DIN EN 14073-2, DIN EN 14073-3, DIN EN 16121, DIN EN 16122

FEMB level:2017 (Level 3)

## TECHNICAL SPECIFICATIONS

<b>FOLDER HEIGHT</b>	5
<b>WIDTH</b>	80 cm
<b>TOTAL HEIGHT</b>	204 cm
<b>DEPTH</b>	44 cm
<b>NO. OF ADJUSTABLE SHELVES</b>	1
<b>NO. OF FIXED SHELVES</b>	1
<b>WEIGHT</b>	78 kg

## BENEFITS/SPECIALS



Board material melamine coated with robust plastic edge



High quality locking bar



Pull-out proof shelf supports



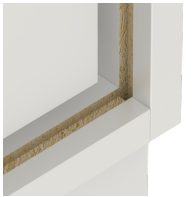
Metal cup hinges with 240° opening angle



1 OH cabinet with handle or lock



Optionally with robust steel base



Resistance to warping due to 8 mm thick back wall



Including hanging file drawer



Carcass firmly doweled and glued ex works