

CLASSROOM TABLE, TWO-SEATER (130X50/55 CM) MODEL 7220



STANDARD VERSION

Tabletop, 3-layer chipboard (E1), melamine coated, highly abrasion-resistant, with 3 mm plastic edge, thickness: 25 mm.

Note: Table height specifications refer to a tabletop thickness of 25 mm.

Center column frame with double tube, side parts round tube: 30/2 mm. Plate support steel angle: 30/30/3 mm. Crosspiece oval tube: 50/20/2 mm, welded in as fascia. Frame epoxy coated, with plastic floor protectors.

With plate support in the middle and satchel hooks on both sides.

Note: It is not possible to combine the book storage basket and chair suspension equipment options.

OPTIONS

- Tabletop with ASSODUR® edge
- Table top HPL glued
- Table top glued with solid wood edge glue-in crowned
- Table top WOODMARK, 21.5 mm
- Table top compact board 12 mm
- Table top Multiplex, 20 mm
- Felt floor protectors
- Table frame chrome plated
- Glossy, galvanized book basket
- Chair suspension C-shape chairs
- Chair suspension
- Chair suspension PAGHOLZ® sled-base chair

STANDARD

DIN EN 1729-1, DIN EN 1729-2

FEMB level:2017 (Level 3)

SIZES

SIZE	2	3	4	5	6	7
TABLE WIDTH	130 cm	130 cm	130 cm	130 cm	130 cm	130 cm
TABLE HEIGHT	52 cm	58 cm	64 cm	70 cm	76 cm	82 cm
TABLE DEPTH	50/55 cm	50/55 cm	50/55 cm	50/55 cm	50/55 cm	50/55 cm
STACKABILITY	-	-	-	-	-	-
NUMBER OF SEATS	2	2	2	2	2	2
WEIGHT	13 kg	14 kg	14 kg	15 kg	15 kg	16 kg

Our range of materials and colors can be found in the A2S material overview.



A2S-Furnishing Systems Ltd.
ASS-Einrichtungssysteme GmbH
info@a2s.com
WWW.A2S.COM

CLASSROOM TABLE, TWO-SEATER (130X50/55 CM) MODEL 7220



BENEFITS/SPECIALS



Melamine coated table top with robust plastic edge



Optional melamine coated table top with ASSODUR® edge



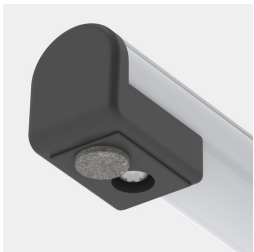
Optional compact board as table top



Optional table top multiplex melamine coated



Optional melamine coated table top with solid wood edge



Optionally with felt floor protectors



Includes one satchel hook per seat



Optional WOODMARK table top in shatterproof quality



Seating on both sides due to central column frame