

SCHOOL TABLE, TWO-SEATER (150X65 CM) MODEL 9538



STANDARD VERSION

Tabletop, 3-layer chipboard (E1), melamine coated, highly abrasion-resistant, with 3 mm plastic edge, thickness: 25 mm.

Note: Table height specifications refer to a tabletop thickness of 25 mm.

C-shape double column underframe. Side parts oval tube: 40/20/1.5 mm and 50/30/2 mm, plate support steel angle: 30/30/3 mm. Oval tube crossbar: 50/20/2 mm, welded in as fascia. Frame epoxy coated, with plastic floor protector.

With satchel hooks on both sides.

With plate support in the middle.

OPTIONS

- Tabletop with ASSODUR® edge
- Table top HPL glued
- Table top glued with solid wood edge glue-in crowned
- Table top compact board 12 mm
- Table top Multiplex, 20 mm
- Felt floor protectors
- Glossy, galvanized book basket
- Chair suspension C-shape chairs
- Chair suspension
- Chair suspension PAGHOLZ® sled-base chair
- Chair suspension FLEX GF 5-7 3D rocker
- Chair suspension FLEX GF 3-5 3D rocker
- 1 pair of rails for Tidy Box
- Tidy Box including rails

STANDARD

DIN EN 1729-1, DIN EN 1729-2

FEMB level:2017 (Level 3)

SIZES

SIZE	2	3	4	5	6	7
TABLE WIDTH	150 cm	150 cm	150 cm	150 cm	150 cm	150 cm
TABLE HEIGHT	52 cm	58 cm	64 cm	70 cm	76 cm	82 cm
TABLE DEPTH	65 cm	65 cm	65 cm	65 cm	65 cm	65 cm
STACKABILITY	-	-	-	-	-	-
NUMBER OF SEATS	2	2	2	2	2	2
WEIGHT	20 kg	20 kg	21 kg	21 kg	22 kg	22 kg

Our range of materials and colors can be found in the A2S material overview.



A2S-Furnishing Systems Ltd.
ASS-Einrichtungssysteme GmbH
info@a2s.com
WWW.A2S.COM

SCHOOL TABLE, TWO-SEATER (150X65 CM) MODEL 9538



BENEFITS/SPECIALS



Melamine coated table top with robust plastic edge



Optional melamine coated table top with ASSODUR® edge



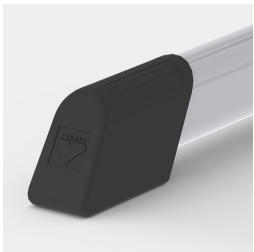
Optional compact board as table top



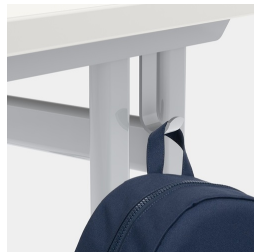
Optional table top multiplex melamine coated



Optional melamine coated table top with solid wood edge



Floor protectors with integrated step protection



Including satchel hooks left and right



Due to C-shape no disturbance of the table legs when getting in and out of the table