

# FLEX GAS LIFT SWIVEL CHAIR WITH TABLE SUSPENSION

MODEL 7873.005



## STANDARD VERSION

Plastic shell ergonomically shaped. Material made of polypropylene, recyclable, manufactured in double-wall blown process. Thus soft sitting due to air cushioning effect, with integrated ventilation channels and groove to relieve the spine. Grip hole in the lumbar region and recessed grips on the upper edge of the backrest and underside of the chair.

Aluminum 5-star base, with infinitely variable gas lift height adjustment. Round tubular column: 50 mm, epoxy coated. Version with table suspension under the seat shell. With plastic feet.

## OPTIONS

- Fully upholstered FLEX (size 5-7)
- Felt floor protectors
- Load-dependent braking casters (SH +3 cm)
- Locking casters (SH +3 cm)
- Polished aluminum base

## STANDARD

FEMB level:2017 (Level 3)

GS-zertifiziert gem. DIN EN 1729-1, DIN EN 1729-2

## LOAD CAPACITY

125 kg

## SIZES

|              |          |
|--------------|----------|
| SIZE         | 5-7      |
| CHAIR WIDTH  | 62 cm    |
| CHAIR HEIGHT | 76-89 cm |
| SEAT HEIGHT  | 39-51 cm |
| CHAIR DEPTH  | 62 cm    |
| STACKABILITY | -        |
| WEIGHT       | 9 kg     |

Our range of materials and colors can be found in the A2S material overview.



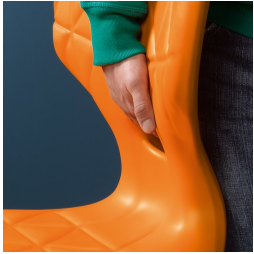
A2S-Furnishing Systems Ltd.  
ASS-Einrichtungssysteme GmbH  
info@a2s.com  
WWW.A2S.COM

# FLEX GAS LIFT SWIVEL CHAIR WITH TABLE SUSPENSION

MODEL 7873.005



## BENEFITS/SPECIALS



Easy to carry due to low weight



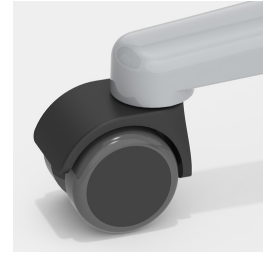
Table suspension protects the table when it is stacked



Height adjustment by safety gas spring



Optional seat shell fully upholstered from size 5 onwards



Optionally with load-dependent braked casters



Seat shell with integrated ventilation channel



Extremely robust aluminum base

## FABRIC PROPERTIES

### FLEX upholstery

Flame retardant according to DIN 4102 B1 | 250 g/m<sup>2</sup> +/-5% | 40,000 Martindale tours | Linting 4 | ÖKO-Tex 100