

FLEX GAS LIFT SWIVEL CHAIR WITH FOOT RING MODEL 7873.002



STANDARD VERSION

Plastic shell ergonomically shaped. Material made of polypropylene, recyclable, manufactured in double-wall blown process. Thus soft sitting due to air cushioning effect, with integrated ventilation channels and groove to relieve the spine. Grip hole in the lumbar region and recessed grips on the upper edge of the backrest and underside of the chair.

Aluminum 5-star base, with infinitely variable gas lift height adjustment. Round tubular column: 50 mm, epoxy coated. Version with elevation and height-adjustable foot ring, chrome-plated. With plastic feet.

Distance seat floor 495 - 709 mm

OPTIONS

- Fully upholstered FLEX (size 5-7)
- Load-dependent braking casters (SH +3 cm)
- Polished aluminum base
- Felt floor protectors
- Locking casters (SH +3 cm)

STANDARD

FEMB level:2017 (Level 3)

GS-zertifiziert gem. DIN EN 1729-1, DIN EN 1729-2

LOAD CAPACITY

125 kg

SIZES

SIZE	5-7
CHAIR WIDTH	62 cm
CHAIR HEIGHT	85-105 cm
SEAT HEIGHT	53-73 cm
CHAIR DEPTH	62 cm
STACKABILITY	-
WEIGHT	11 kg

Our range of materials and colors can be found in the A2S material overview.



A2S-Furnishing Systems Ltd.
ASS-Einrichtungssysteme GmbH
info@a2s.com
WWW.A2S.COM

FLEX GAS LIFT SWIVEL CHAIR WITH FOOT RING MODEL 7873.002



BENEFITS/SPECIALS



Easy to carry due to low weight



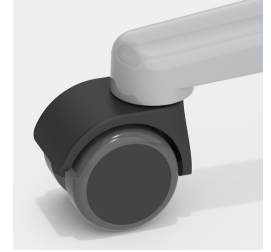
Robust aluminum base with elevation and chrome-plated foot ring, height adjustable



Height adjustment by safety gas spring



Optional seat shell fully upholstered from size 5 onwards



Optionally with load-dependent braked casters



Seat shell with integrated ventilation channel

FABRIC PROPERTIES

FLEX upholstery

Flame retardant according to DIN 4102 B1 | 250 g/m² +/-5% | 40,000 Martindale tours | Linting 4 | ÖKO-Tex 100