

# FLEX SWIVEL SPINDLE CHAIR MODEL 7875



## STANDARD VERSION

Plastic shell ergonomically shaped. Material made of polypropylene, recyclable, manufactured in double-wall blown process. Thus soft sitting due to air cushioning effect, with integrated ventilation channels and groove to relieve the spine. Grip hole in the lumbar region and recessed grips on the upper edge of the backrest and underside of the chair.

Steel 5-star base, infinitely variable height adjustment by concealed steel swivel spindle with anti-rotation device. Round tubular column: 50 mm, epoxy coated. Floor protector with step protection.

## OPTIONS

- Fully upholstered FLEX (size 5-7)
- Felt floor protectors
- Casters (SH +3 cm)

## STANDARD

FEMB level:2017 (Level 3)

DIN EN 1729-1, DIN EN 1729-2

## LOAD CAPACITY

125 kg

## SIZES

SIZE	5-7
CHAIR WIDTH	60 cm
CHAIR HEIGHT	78-94 cm
SEAT HEIGHT	43-59 cm
CHAIR DEPTH	60 cm
STACKABILITY	-
WEIGHT	9 kg

Our range of materials and colors can be found in the A2S material overview.

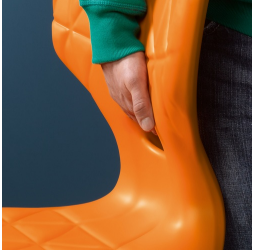


A2S-Furnishing Systems Ltd.  
ASS-Einrichtungssysteme GmbH  
info@a2s.com  
WWW.A2S.COM

# FLEX SWIVEL SPINDLE CHAIR MODEL 7875



## BENEFITS/SPECIALS



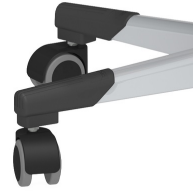
Easy to carry due to low weight



Robust plastic floor protectors  
with step protection



Optional seat shell fully  
upholstered from size 5  
onwards



Optional swivel spindle base  
with rubberized double casters



Seat shell with integrated  
ventilation channel



Extremely robust steel base

## FABRIC PROPERTIES

### FLEX upholstery

Flame retardant according to DIN 4102 B1 | 250 g/m<sup>2</sup> +/-5% | 40,000 Martindale tours | Linting 4 | ÖKO-Tex 100