

GAS LIFT SWIVEL CHAIR MODEL 8377



STANDARD VERSION

Waisted, angular seat shell, shaped to fit the body. Made of multiplex, consisting of beech plywood, veneered lengthwise. Standard in beech multiplex natural, environmentally friendly lacquered with water-based lacquer, edges softly rounded.

Aluminum 5-star base, with infinitely variable gas lift height adjustment. Round tubular column: 50 mm, epoxy coated. With plastic feet.

OPTIONS

- Multiplex COLOUR WOOD
- Handle hole
- Seat upholstery price group 1 (size 6, 7)
- Backrest upholstery price group 1 (size 6, 7)
- Seat upholstery price group 2 (size 6, 7)
- Backrest upholstery price group 2 (size 6, 7)
- Seat upholstery price group 3 (size 6, 7)
- Backrest upholstery price group 3 (size 6, 7)
- Seat upholstery price group 4 (size 6, 7)
- Backrest upholstery price group 4 (size 6, 7)
- 2D rocking mechanism
- 3D rocking mechanism
- Felt floor protectors
- Load-dependent braking casters (SH +3 cm)
- Polished aluminum base
- Partial foot ring
- Table suspension

STANDARD

DIN EN 1729-1, DIN EN 1729-2, DIN EN 16139

FEMB level:2017 (Level 3)

LOAD CAPACITY

125 kg

SIZES

SIZE	5-7
CHAIR WIDTH	63 cm
CHAIR HEIGHT	78-94 cm
SEAT HEIGHT	38-52 cm
CHAIR DEPTH	63 cm
STACKABILITY	-
WEIGHT	8 kg

Our range of materials and colors can be found in the A2S material overview.



A2S-Furnishing Systems Ltd.
ASS-Einrichtungssysteme GmbH
info@a2s.com
WWW.A2S.COM

GAS LIFT SWIVEL CHAIR MODEL 8377



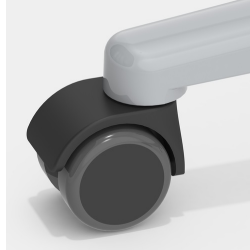
BENEFITS/SPECIALS



Optionally with handle hole in trapezoidal shape (not with backrest upholstery)



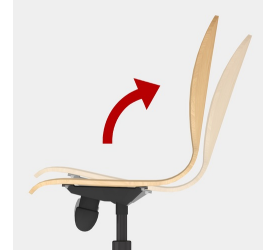
Height adjustment by safety gas spring



Optionally with load-dependent braked casters



Optionally with partial foot ring



Optionally with 2D rocker



Optionally with seat and backrest upholstery



Seat shell environmentally friendly lacquered with water-based varnish



Body contoured seat shell



Extremely robust aluminum base

FABRIC PROPERTIES

INTENSIVE Price group 1

100% polyester | flame retardant according to EN 1021 1&2 | 250 g/m² +/-5% | 100,000 Martindale tours | linting 5 | ÖKO-Tex 100

SKANDIA Price group 1

100% polyester | flame retardant according to EN 1021 1 | 245 g/m² +/-5% | 70,000 Martindale tours | linting 4-5 | ÖKO-Tex 100

FLEECE Price group 1

100% polyester | flame retardant BS 5852:Part1:1979 (cigarette) | 402 g/m² | 100,000 Martindale tours | linting 4 | ÖKO-Tex 100

TAFF B1 Price group 2

100% polyester | flame retardant according to EN 1021 1&2, DIN 4102 B1 | 260 g/m² +/-5% | 70,000 Martindale tours | linting 5 | ÖKO-Tex 100

WOOL Price group 3

100% wool | flame retardant according to EN 1021 1&2 | 460 g/m² +/-5% | 35,000 Martindale tours | linting 4 | tested for harmful substances

PROTEX Price group 3

surface 100% vinyl / fabric 100% polyester | flame retardant according to EN 1021 1&2, DIN 4102 B2 | 685 g/m² | 300,000 Martindale tours | no linting | wipeable with soap and water, water repellent, antibacterial, anti-static, stain resistant, resistant to blood and urine, mold resistant backing and surface, resistant to disinfectants

ARTIFICIAL LEATHER Price group 3

surface 100% polyurethane/ fabric 65% polyester, 35% cotton | flame retardant according to EN 1021-1 | 435 g/m² +/-10% | 100,000 Martindale tours | no linting | tested for harmful substances

ARTIFICIAL LEATHER B1 Price group 4

85% PVC compound, 15% cotton knit | flame retardant according to EN 1021 1&2, DIN 4102 B1 | weight 780 +/-50 g/m² | 75,000 Martindale tours | no linting | tested for harmful substances | resistant to blood and urine, resistant to disinfectants