

## STANDARD VERSION

With stable column guide for wall mounting. Writing surface enamelled and magnetic steel, glued with support plate, guided between the pylons. Edges with natural anodized aluminum profiles and rounded plastic corners. Edging glued watertight. Board includes marker tray.

## OPTIONS

- Extension of the pylons
- Picture strip
- Picture clamp
- Blackboard eraser
- Eraser Felt
- Holder for whiteboard pens
- Whiteboard pen
- Magnets Ø 30 mm
- Power magnets Ø 36 mm
- Drawing tool set, 4 pieces
- Drawing tool set, 6 pieces
- Rulings 01/ 02/ 03/ 04/ 05/ 07/ 08/ 10/ 11/ 12/ 15

## STANDARD

DIN EN 14434, DIN EN 71-3

## TECHNICAL SPECIFICATIONS

<b>WIDTH</b>	250 cm
<b>HEIGHT</b>	120 cm
<b>PYLON HEIGHT</b>	270 cm
<b>NO. OF WRITING SURFACES</b>	1
<b>WEIGHT</b>	100 kg
<b>VERSION</b>	adjustable in height, wall mounted

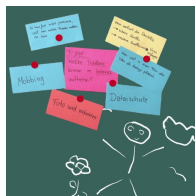
## BENEFITS/SPECIALS



Maintenance-free, low-noise precision guidance on 8 ball-bearing track rollers



Eraser tray for wall mounting included



Magnetic surface can be written on with chalk