

SWIVEL SPINDLE CHAIR WITH CASTERS

MODEL 7849



STANDARD VERSION

PAGHOLZ® waisted shell, with ergonomic three-dimensional shell shape. Surface melamine coated and pore sealed with a scratch, impact and abrasion resistant finish created in the pressing process. Seat and back surface with pressed-in texture. Steel 5-star base, infinitely variable height adjustment by concealed steel swivel spindle with anti-rotation device. Round tubular column: 50 mm, epoxy coated. Load-dependent braked casters with step protection.

OPTIONS

- PAGHOLZ® Color Wood - Price group 2
- PAGHOLZ® COLOUR WOOD
- Handle hole
- Seat upholstery price group 1 (size 6E, 7)
- Backrest upholstery price group 1 (size 6E, 7)
- Seat upholstery price group 2 (size 6E, 7)
- Back upholstery price group 2 (size 6E, 7)
- Seat upholstery price group 3 (size 6E, 7)
- Backrest upholstery price group 3 (size 6E, 7)
- Seat upholstery price group 4 (size 6E, 7)
- Backrest upholstery price group 4 (size 6E, 7)

STANDARD

FEMB level:2017 (Level 3)

DIN EN 1729-1, DIN EN 1729-2

LOAD CAPACITY

125 kg

SIZES

SIZE	5-7
CHAIR WIDTH	68 cm
CHAIR HEIGHT	70-85 cm
SEAT HEIGHT	40-58 cm
CHAIR DEPTH	68 cm
STACKABILITY	-
WEIGHT	6 kg

Our range of materials and colors can be found in the A2S material overview.



A2S-Furnishing Systems Ltd.
ASS-Einrichtungssysteme GmbH
info@a2s.com
WWW.A2S.COM

SWIVEL SPINDLE CHAIR WITH CASTERS

MODEL 7849



BENEFITS/SPECIALS



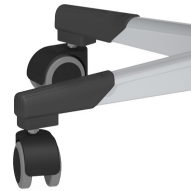
PAGHOLZ® from sustainable forestry



Optionally with grip hole, round or oval



Optionally with seat and backrest upholstery (only sizes 6E, 7)



Optional swivel spindle base with rubberized double casters



Indestructible PAGHOLZ® shell, scratch, break and impact resistant; flame retardant



Ergonomically and orthopedically adapted shell shape

FABRIC PROPERTIES

INTENSIVE Price group 1

100% polyester | flame retardant according to EN 1021 1&2 | 250 g/m² +/-5% | 100,000 Martindale tours | linting 5 | ÖKO-Tex 100

SKANDIA Price group 1

100% polyester | flame retardant according to EN 10211 | 245 g/m² +/-5% | 70,000 Martindale tours | linting 4-5 | ÖKO-Tex 100

FLEECE Price group 1

100% polyester | flame retardant BS 5852:Part1:1979 (cigarette) | 402 g/m² | 100,000 Martindale tours | linting 4 | ÖKO-Tex 100

TAFF B1 Price group 2

100% polyester | flame retardant according to EN 1021 1&2, DIN 4102 B1 | 260 g/m² +/-5% | 70,000 Martindale tours | linting 5 | ÖKO-Tex 100

WOOL Price group 3

100% wool | flame retardant according to EN 1021 1&2 | 460 g/m² +/-5% | 35,000 Martindale tours | linting 4 | tested for harmful substances

PROTEX Price group 3

surface 100% vinyl / fabric 100% polyester | flame retardant according to EN 1021 1&2, DIN 4102 B2 | 685 g/m² | 300,000 Martindale tours | no linting | wipeable with soap and water, water repellent, antibacterial, anti-static, stain resistant, resistant to blood and urine, mold resistant backing and surface, resistant to disinfectants

ARTIFICIAL LEATHER Price group 3

surface 100% polyurethane/ fabric 65% polyester, 35% cotton | flame retardant according to EN 1021-1 | 435 g/m² +/-10% | 100,000 Martindale tours | no linting | tested for harmful substances

ARTIFICIAL LEATHER B1 Price group 4

85% PVC compound, 15% cotton knit | flame retardant according to EN 1021 1&2, DIN 4102 B1 | weight 780+/-50 g/m² | 75,000 Martindale tours | no linting | tested for harmful substances | resistant to blood and urine, resistant to disinfectants