



FIRSTWALD PROTESTANT HIGH SCHOOL, KUSTERDINGEN



1

- 1/3 The multifunctional atrium forms the heart of the building. Its everyday use is as a canteen, but for special events it serves as a function hall.
- 2 Folding tables make the transition quick and easy, while the four-legged, stacking chairs with their triple-tinted white multiplex seats can be linked to form neat rows.
- 4/5 The combination of double and individual tables with stacking C-shaped cantilever chairs allows for flexible room arrangements to suit different teaching methods. The individual tables are also height-adjustable.
- 6 Comfortable beanbag chairs break up the straight lines.
- 7/8 Incorporating the corridors makes flexible study possible throughout the building - either in groups at a round table or in complete peace in one of the screened study carrels.



7



8



4



5



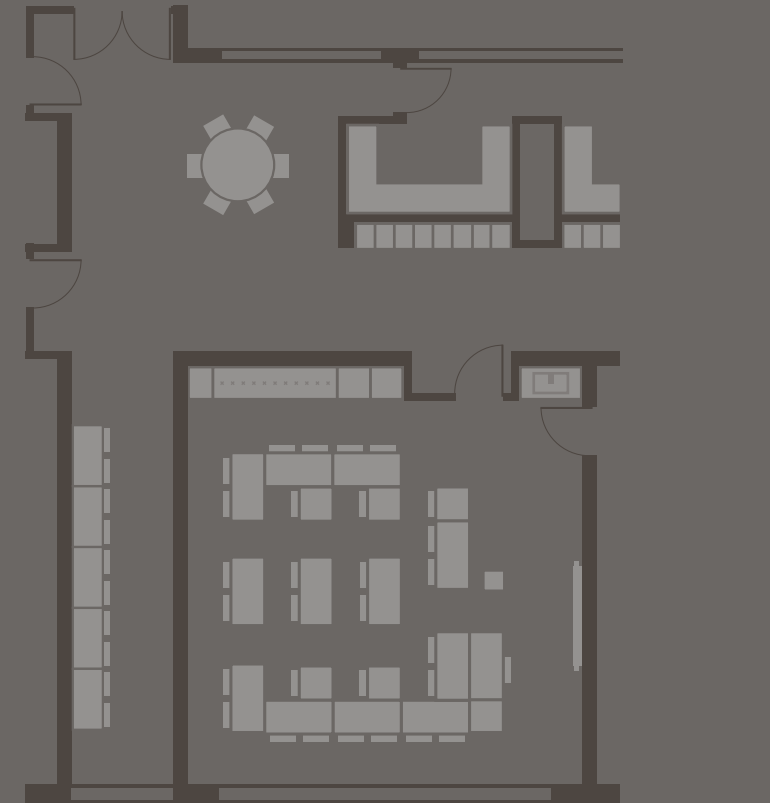
2



3



6



BUILDING

Firstwald Protestant High School, Kusterdingen, 2015

Project

A school building with a ground floor that will be a „roofed plaza within the building“ for multi-functional occupation and use is being added to the Kusterdingen campus.

Concept

Masonry has been used for the solid parts of the building fabric, endorsing sustainable construction techniques and the atrium, which is open to all the floors above, forms a centrepoint around which all the rooms are arranged. The public facilities such as the canteen, library and music room are to be found on the ground floor, while all the general classrooms and group rooms are located on the first floor. The second floor houses the specialist subject rooms, the teachers’ area and the school offices.

Architects

KLUMPP + KLUMPP Architekten BDA, Stuttgart

FEATURES

Interior Design

Concept

Harmoniously blending into the materials and colour scheme of the building’s design concept, the unforced straight lines in white and light grey that have been incorporated into the fixtures and fittings are understated, with a flexibility that ensures a flowing transition between learning methods.

Options

Whether in a traditional classroom, on the round group seating in the open study area, in the canteen or at one of the screened workspaces in the side hall, everybody - from groups to individual students - will find the study space that is right for them.

Flexible furniture means that the canteen can quickly and easily be transformed into a theatre auditorium or function hall.

Sustainability

Quality that’s made in Germany. Responsible management of resources is essential for products that will shape generations to come. A2S have already netted a host of awards and certificates for their short manufacturing chains, refusal to use solvents and tropical woods and standards that lie well within legal maximums.



DER BILDUNGSEINRICHTER.